



THREE PASS FIRETUBE COMPACT BOILERS

■ HURST "PERFORMANCE" BOILERS ■

LPE SERIES

THROUGH THE DOOR DESIGN!

Available with...LOW NOx

**HEAVIEST DESIGNED
BOILER IN ITS CLASS**



**Capacities From
20 to 100 HP
670 to 3,348 MBTU/HR.**

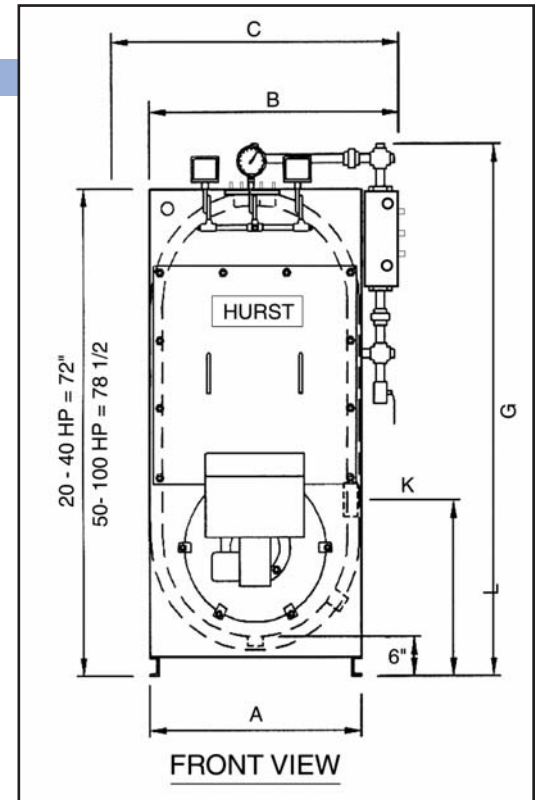
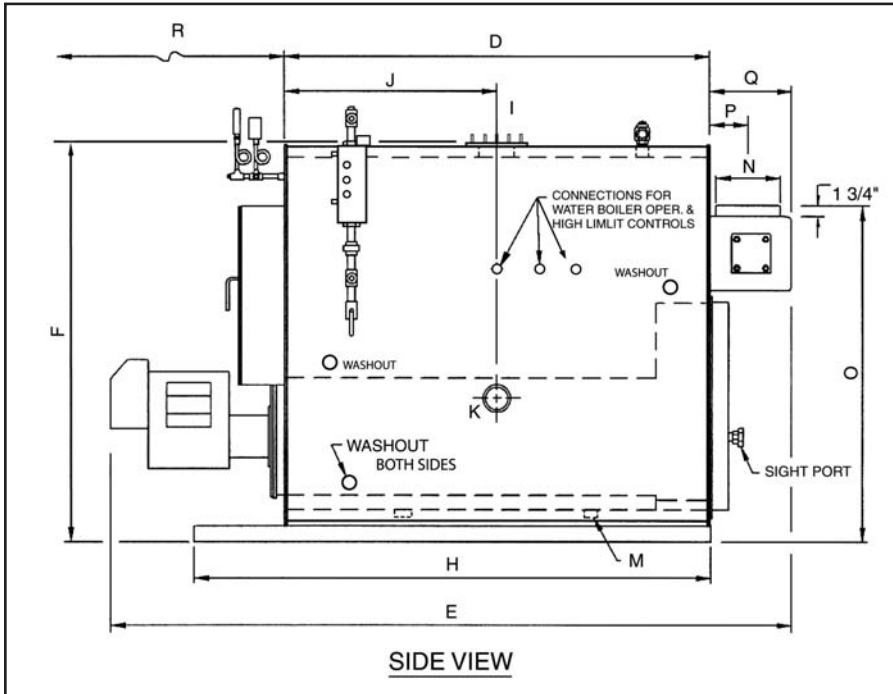
**15 PSI Steam
30 PSI Water
[60 PSI Water Optional]**

**UL Approved Forced
Draft Burners**

Designed, constructed and stamped
in accordance with the requirements
of the ASME Boiler Codes.



Inspected and registered with
the National Board of Boiler &
Pressure Vessel Inspectors.



BOILER SPECIFICATIONS

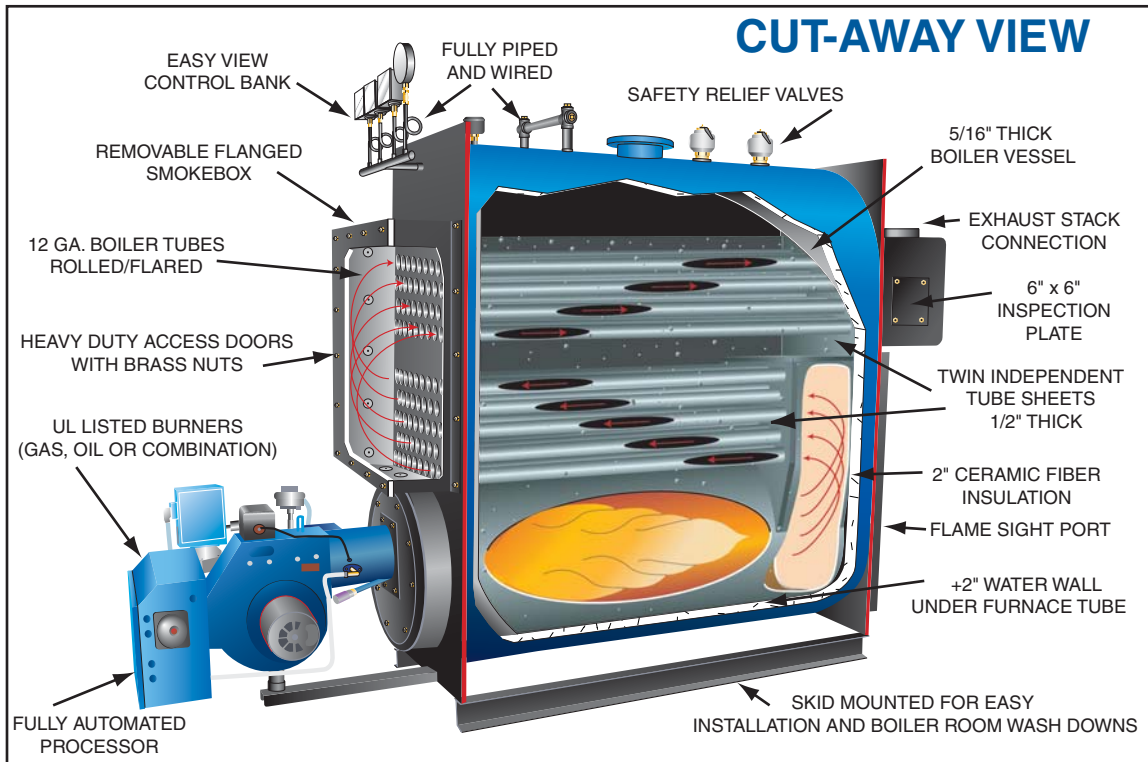
(ALL DIMENSIONS ARE IN INCHES)

DIMENSIONS SUBJECT TO CHANGE WITHOUT NOTICE. CERTIFIED DRAWINGS AVAILABLE UPON REQUEST.

BOILER HORSEPOWER			20	30	40	50	60	70	80	100	
HEATING SURFACE	FIRESIDE	SQ.FT.	100	132 1/2	165 1/2	200	246	291	336	400	
STEAM OUTPUT FROM & @212° F		LBS/HR	690	1035	1380	1725	2070	2415	2760	3450	
MBH OUTPUT			670	1004	1339	1674	2009	2343	2678	3348	
FIRING RATE, GAS	1,000 BTU	CFH	840	1260	1680	2100	2520	2940	3360	4200	
FIRING RATE, #2 OIL	140,000 BTU	GPH	6	9	12	15	18	21	24	30	
A WIDTH WITHOUT TRIM		IN	31	31	31	34 1/2	34 1/2	34 1/2	34 1/2	34 1/2	A
B WIDTH WITH TRIM		IN	38	38	38	42	42	42	42	42	B
C WIDTH WITH GAS TRAIN		IN	49	49	49	52	52	52	52	52	C
D BOILER LENGTH		IN	37	49	61	55	67	79	91	106	D
E OVERALL LENGTH	STD. BURNER	IN	86	98	114	111	123	140	152	169	E
F SUPPLY HEIGHT		IN	71 1/2	71 1/2	71 1/2	76 5/8	76 5/8	76 5/8	76 5/8	76 5/8	F
G HEIGHT WITH TRIM		IN	79	79	79	86	86	86	86	86	G
H LENGTH OF SKID		IN	54	66	78	72	84	96	108	123	H
I SUPPLY SIZE		IN	4	4	4	* 6	* 6	* 6	* 6	* 6	I
J SUPPLY LOCATION		IN	18 1/2	24 1/2	30 1/2	27 1/2	33 1/2	39 1/2	45 1/2	50 1/2	J
K RETURN SIZE		IN	4	4	4	4	4	4	4	4	K
L RETURN LOCATION		IN	27 1/4	27 1/4	27 1/4	32	32	32	32	32	L
M BOILER DRAIN SIZE		IN	1	1	1 1/4	1 1/4	1 1/4	1 1/2	1 1/2	1 1/2	M
N STACK DIAMETER, O.D.		IN	10	10	10	12	12	12	12	14	N
O STACK HEIGHT		IN	60 1/4	60 1/4	60 1/4	67 1/4	67 1/4	67 1/4	67 1/4	67 1/4	O
P TO CENTER OF STACK		IN	6 7/8	6 7/8	6 7/8	8 1/4	8 1/4	8 1/4	8 1/4	9 1/4	P
Q REAR SMOKEBOX DEPTH		IN	13 3/4	13 3/4	13 3/4	15 3/4	15 3/4	15 3/4	15 3/4	17 3/4	Q
R TUBE PULL SPACE		IN	38	50	62	56	68	80	92	107	R
SHIPPING WEIGHT		LBS	2952	3670	4332	4342	5046	5875	6597	7464	
WATER CONTENT - WATER	FLOODED	GALS	141	191	245	255	313	394	434	508	
WATER CONTENT - STEAM		GALS	120	163	209	194	239	306	333	390	
BOILER HORSEPOWER			20	30	40	50	60	70	80	100	

CONNECTIONS FOUR INCHES AND SMALLER ARE FEMALE THREAD, 6" CONNECTIONS ARE 150 LB. FLANGES. * STUDDING FLANGE.

LOW PRESSURE THREE PASS BOILERS



STANDARD EQUIPMENT

BOILER: Three pass design for 15 psi steam or 30 psi water (optionally available for 60 psi water). Factory assembled with trim, tested, ASME code, UL, and CSD-1 standards.

STEAM TRIM: Kunkle safety relief valve, operating pressure control, high limit pressure control with manual reset, 4 1/2" steam pressure gauge with syphon and test cock, combination pump control and low water cut-off with gauge glass assembly and drain valve, auxiliary low water cut-off with manual reset.

WATER BOILER TRIM: Kunkle safety relief valve, operating temperature control, high limit temperature control with manual reset, 3 1/2" combination pressure & temperature gauge, M&M 750 low water cut-off control with manual reset.

BURNER: UL listed with pre-piped, wired and factory tested forced draft power burners for natural gas, propane (LP) gas, No. 2 (diesel) oil, or combination gas/oil.

■ HURST “PERFORMANCE” BOILERS ■

- Factory Assembled, Prewired and Tested
- No Field Assembly Required
- UL Listed Boiler/Burner Packages
- Fully Assembled, Pre-piped, Prewired, Pressure Tested Gas Trains
- Complies with ASME, UL, CSD-1 and ASHRAE Standards
- High Efficiency, Low Stack Temperatures
- Customer Service Support Through National Network of Sales, Service, Start-up Training and Parts by Factory Representatives

LPE BOILER FEATURES

Modified Scotch designed to fit through a standard 36” x 80” door opening
Up to 100HP (3,348 mbh output).

The Hurst LPE “Performance” boiler is America’s most heavily designed and built boiler in its class. Consider the features and specify the Hurst LPE.

1. A welded steel firetube boiler, the LPE has extra-heavy 12-gauge tubes for extended life. All tubes are attached to the tube sheets by rolling and flaring. There are no welded tubes in the LPE.
2. Thickest materials used in the industry . . .
 - A. Boiler shell is 5/16” thick boiler plate 20-40 HP / 3/8” 50-100 HP.
 - B. Twin boiler tube sheets are 1/2” thick boiler plate.
 - C. Insulation is 2” mineral wool and is lagged with 22-gauge boiler jacket.
 - D. Extra heavy 4” channel iron boiler skids.
3. Designed to last with special industrial grade features . . .
 - A. Couplings are 3,000 psi.
 - B. Flanged, detachable front and rear smoke boxes.
 - C. Brass nuts on front access panels, brass plugs in factory pre-piped crosses and tees on trim.

Revised 03/02

hurstboiler.com



P. O. Drawer 530
21971 Highway 319 N.
Coolidge, Georgia 31738
1-877-994-8778 (Toll Free)
(229) 346-3545 (Tel.)
(229) 346-3874 (Fax.)
e-mail: info@hurstboiler.com